

# MAT Champions (MATch)

**What:** A mentorship program to encourage and support the care of patients with opioid use disorder.

**When:** To launch late April 2021 and continue through October 2021.

**Who:** A mentorship program bringing together MAT champions/experts (mentors) with providers new to MAT care (mentees). We welcome inpatient and outpatient providers across CommonSpirit Health. Executive sponsorship from Drs. Alisahah Cole and Gary Greensweig, and supported by the Addiction Treatment Access Group (ATAG).

**How:** Sign up or express interest as a mentor or mentee online at: [commonspiritpophealth.org/match-program](https://commonspiritpophealth.org/match-program). Or contact the Addiction Network at [addictionnetwork@dignityhealth.org](mailto:addictionnetwork@dignityhealth.org).

## Background

Assuring equitable access to compassionate, evidence-based addiction care is critical in supporting our patients' needs and helping those struggling with substance use. Providers should be prepared in the diagnosis and treatment of patients with substance use disorders, and all staff should be knowledgeable in how to best support this care. This includes the use of medications for addiction treatment (MAT), such as buprenorphine, which requires DEA x-waiver licensure.



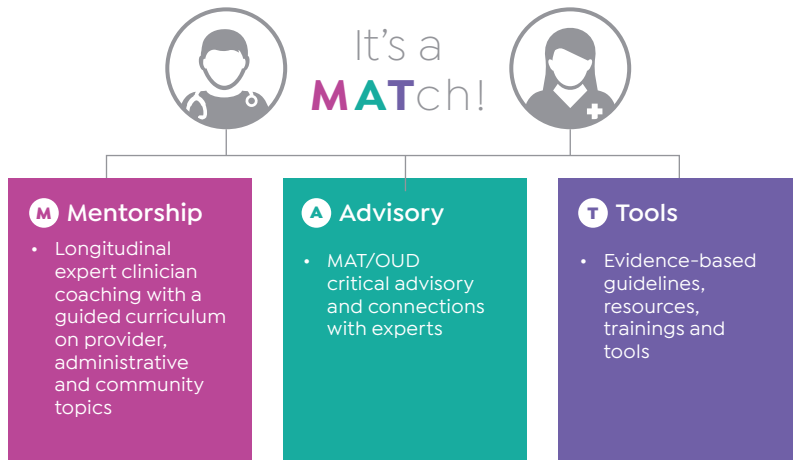
Access to MAT in a community has been shown to be a predictor of opioid use disorder morbidity and mortality (Volkow, 2014); access saves lives, reduces complications from drug use, including overdoses, and saves money (Volkow, 2014; Ling, 2012; Woody, 2014; Mohlman, 2016).

We are obliged to assure equitable access to MAT and other forms of addiction care across CommonSpirit Health (CSH). Providers need to be encouraged and supported in providing addiction care. This includes mentorship by clinical champions and support with tools and guidelines for inpatient and outpatient providers and their staff who are starting out in providing MAT.

A MAT Champions (MATch) mentorship program of the CSH Addiction Treatment Access Group (ATAG) will serve as a signature program of the Population Health Addiction Network.

## Design

The MAT Champions program, or “MATch”, will include longitudinal Mentorship, clinical Advisory, and evidence-based, high-value Tools and guidelines:



## Aims

- 1 Increase access to compassionate, evidence-based MAT care;
- 2 Promote equity for all substance use disorder patients seeking care across CSH;
- 3 Support providers and staff in providing addiction care with high-value tools and guidelines;
- 4 Foster professional mentorship and support that promotes evidence-based practice;
- 5 Highlight and learn from best-practice champions across CSH.

## M Mentorship

A six months, longitudinal mentorship program will connect MAT champion/expert mentors with mentees initiating, or thinking about initiating, MAT clinical care. Mentees may also be MAT and substance use disorder grant awardees/recipients. Mentorship will be informed by a suggested curricular structure or topic list, but mentor-mentee pairings will be encouraged to use their time in a way that meet the unique needs and/or questions of the mentee. Suggested curricular topics will include the following:

### Provider Evidence-Based Practice

- a. Timely topics in OUD clinical care
- b. Best practices in MAT clinical care
- c. Troubleshooting the challenges in MAT clinical care

### Administrative Guidelines

- a. Building an interdisciplinary team to share responsibility
- b. Documentation and compliance
- c. Billing

### Community Partnerships

- a. Identifying community resources
- b. Partnerships with behavioral health
- c. Engaging patients and people in recovery

Monthly, or more frequent, touchpoints between mentor-mentee will be encouraged. Participation in the monthly MAT/ALTO meeting will also be encouraged. Mentees will be matched to mentors along geographic and clinic characteristics: inpatient vs. outpatient practice, rural vs. urban practice, etc.

## A Advisory

A group of MAT champions and experts will serve as clinical advisors during monthly MAT/ALTO meetings. Their expertise will inform the creation and collection of tools and guidelines.

## T Tools

Evidence-based and high-value tools, guidelines and resources will be created and collected, informed by the clinical advisory group and approved by the MAT/ALTO group. These tools will be hosted on the CSH Population Health Connect website. Resources may include the following:

- 1 MAT Visit Flowsheet for New and Established Patients
- 2 MAT Patient Agreement and Expectations
- 3 MAT Visit Checklist for New and Established Patients
- 4 Example Note Templates for New and Established Patients
- 5 End-of-Visit Summary Template for Patients